



**SPEED**

**INSULATED CONDUCTOR RAIL  
FOR ELECTRICAL FEEDING OF CRANES**

**ALSTOM**

## Features, advantages and benefit

The multi-pole insulated conductor rail **CARIBONI**, series SPEED represents the best solution for the electrical feeding of monorails, hoists, elevators, motorized doors and gates and other mobile machines in general. The main fields of application are storage handling, packaging and industrial automation. The SPEED system marks from the other feeding systems for the high flexibility and versatility of the insulating housing, which allows to realize very easily curved lines with radius up to 0,5 m. Besides you can reach very high speeds with the special current collectors.

Other characteristics, which mark the SPEED line are:

- Top safety
- Compact arrangement
- Easy and fast installation
- Easy check and inspection
- Practically no costs of maintenance
- Number of conductors adjustable according to the need
- Continuous conductor, without electrical joints
- Either vertical (preferable) and horizontal installation



ISO9001



ISO14001

**CE MARK:** it guarantees that Cariboni's products are complying with the European standards concerning safety of products.



BS OHSAS 18001

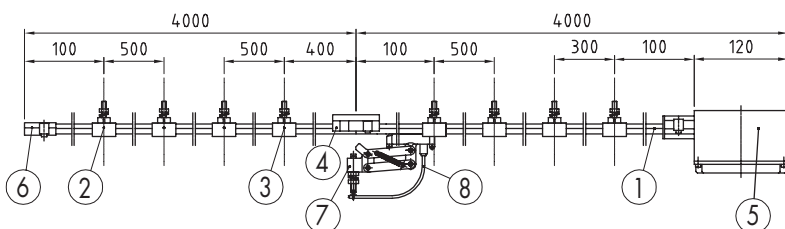
## Technical specifications

Operating voltage	max 600 V
Continuous load	40 Amp
Environment temperature range	-30 +55 °C
Resistance at 20°C	0.00223 Ω/m
Impedance	0.00224 Ω/m
Maximum travelling speed	300 m/1'
Nominal length of rail sections	4 m
Inter - axis between conductors	16 mm
Minimum bending radius	0.5 m
Distance between hangers - straight line	0.5 m
Distance between hangers - curved line	max 0.3 m
Protection degree	IP 2X

## Example of a possible installation



- ① MULTI-POLE INSULATED CONDUCTOR RAIL
- ② SUPPORT HANGER
- ③ FIXED POINT HANGER
- ④ JOINT
- ⑤ END FEEDING BOX
- ⑥ END CLOSURE BOX
- ⑦ CURRENT COLLECTOR - LOAD 25 AMP.
- ⑧ CURRENT COLLECTOR CONNECTON CABLE



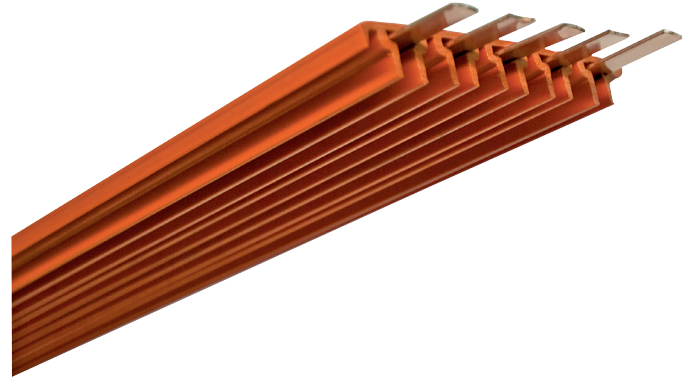
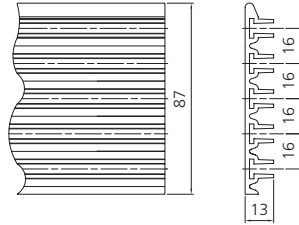
# SPEED 40 A

## Components

## Insulated conductor rail for electrical feeding of cranes

**1** Multi-pole insulated conductor rail 40A**FEATURES:**

It is made up to 5 copper conductors inserted into a PVC housing equipped with 5 seats, supplied in standard pieces 4 mts long. The conductor is supplied wrapped in rolls and when the housing pieces are installed all along the line length, it is possible to slide in the conductor for all the length you need.



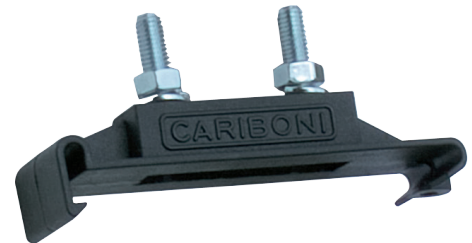
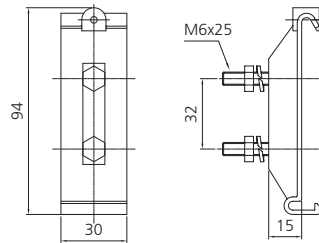
CODE	LOAD (A)	L (m)	CONDUCTORS N°	WEIGHT (kg/m)
03.01305.92	40	4	3	0,349
03.01305.91			4	0,422
03.01305.90			5	0,495

**2** Support hanger**FEATURES:**

CODE: **03.01375.90**

It supports PVC housing, allowing the free sliding during the expansion.

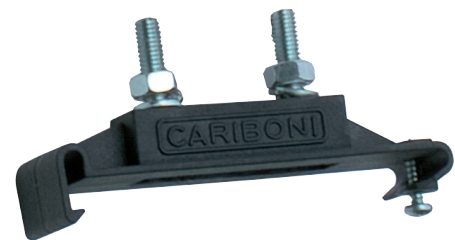
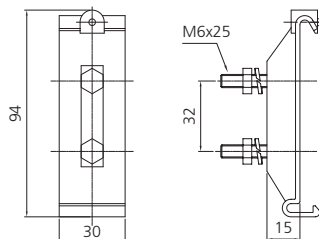
CODE	WEIGHT (kg/pc)
03.01375.90	0,040

**3** Fixed point hanger**FEATURES:**

CODE: **03.01385.90**

It is a support hanger but with a screw in order to fix it to the housing.

CODE	WEIGHT (kg/pc)
03.01385.90	0,040



## Insulated conductor rail for electrical feeding of cranes

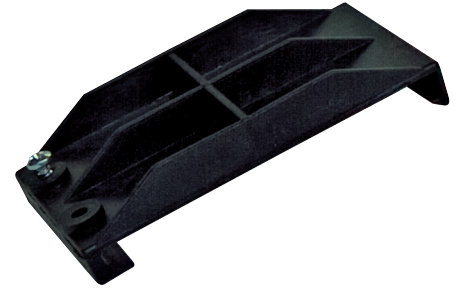
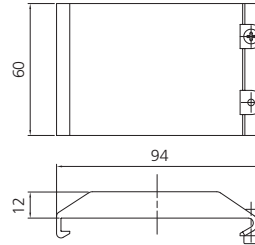
## 4 Joint

## FEATURES:

CODE: **03.01315.90**

It is made of insulating material and used to connect 2 pieces of PVC housing.

CODE	WEIGHT (kg/pc)
03.01315.90	0,035



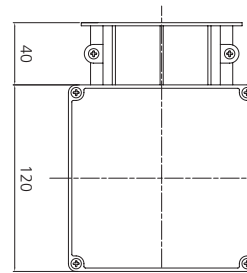
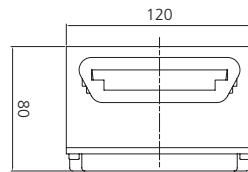
## 5 End feeding box

## FEATURES:

CODE: **03.01325.90**

It is used to realize the connection of the feeder cable to the copper conductors. It is installed at one extremity of the line.

CODE	WEIGHT (kg/pc)
03.01325.90	0,200



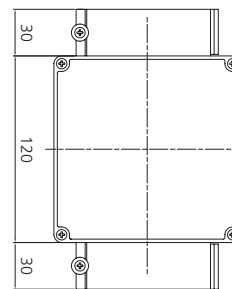
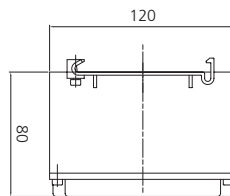
## 6 Line feeding box

## FEATURES:

CODE: **03.01335.90**

It is used to realize the connection of the feeder cable to the copper conductors. It is installed between two conductor rails.

CODE	WEIGHT (kg/pc)
03.01335.90	0,200



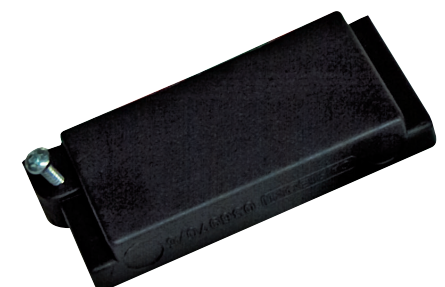
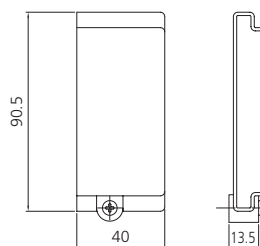
## 7 End closure box

## FEATURES:

CODE: **03.01365.90**

It is isolating and used to close the conductor rail extremities.

CODE	WEIGHT (kg/pc)
03.01365.90	0,025



## Insulated conductor rail for electrical feeding of cranes

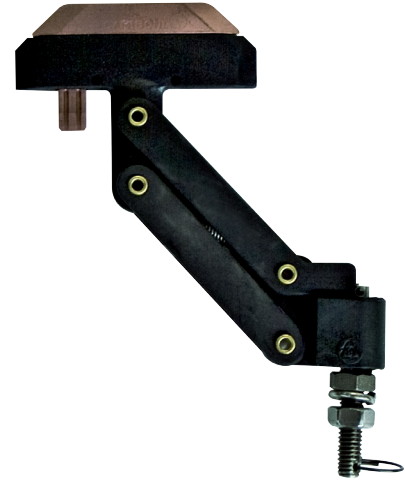
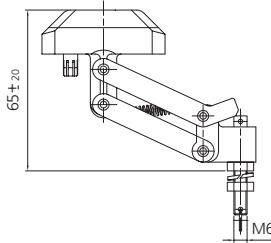
## 8 Current collector - load 25 A

## FEATURES:

CODE: **03.01282.91N**

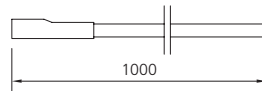
It is articulated in all directions and fully isolated. The sliding contact is realized by metallic carbon shoe and can be removed. A proper flexible cable with pressure lug, to be ordered separately, is used for the electric connection.

CODE	WEIGHT (kg/pc)
03.01282.91N	0,040



## 9 Current collector connection cable

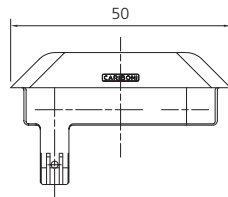
## FEATURES:

CODE: **03.01286.91**

## SPARE PARTS

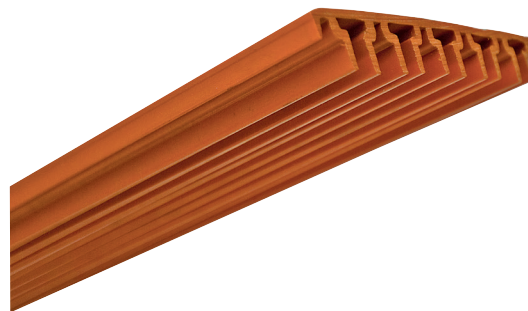
## 10 Contact shoe for current collector

CODE	WEIGHT (kg/pc)
713000049	0,010



## 11 PVC housing

CODE	WEIGHT (kg/pc)
7.21.00.0317	0,130



## 12 Copper conductor 40A

CODE
03.01310.90



